

Name

Spiral Review 9

Directions: Write your answers in the blank. Show your work for each question

1. $-2 + (-20)$

Answer _____

2. $1\frac{1}{2} \div \left(2\frac{3}{4}\right)$

Show your work

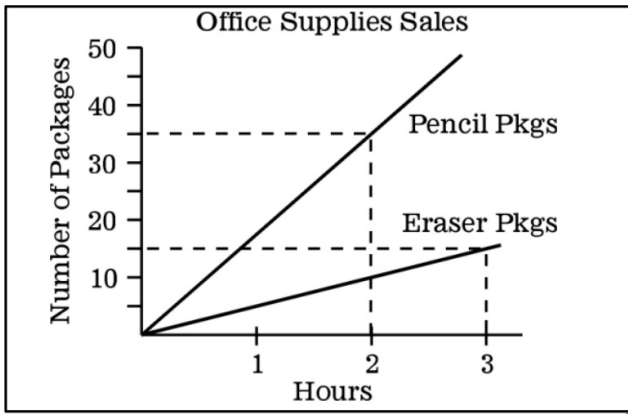
Answer _____

3. Simplify: $\frac{\left(\frac{5}{6} - \frac{2}{3}\right)}{\frac{3}{4}}$

Show your work

Answer _____

4. The graph represents the packages of pencils sold and the packages of erasers sold.



Show your work

Which product was sold at a faster rate and by how many packages?
Explain how you arrived at your answer.

5. The distance from the floor to the bottom of a framed painting is $4\frac{1}{2}$ feet. The height of the painting is 2 feet. The distance from the top of the painting to the ceiling is $4\frac{1}{4}$ feet. What is the total height from the floor to the ceiling?

Show your work

Answer _____ feet