

Spiral Review 19

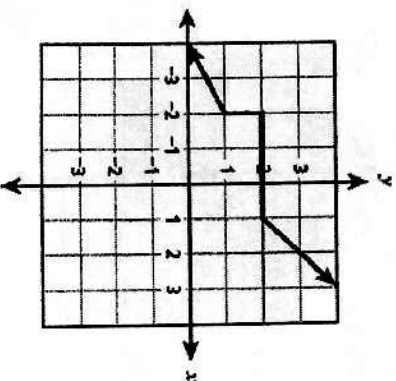
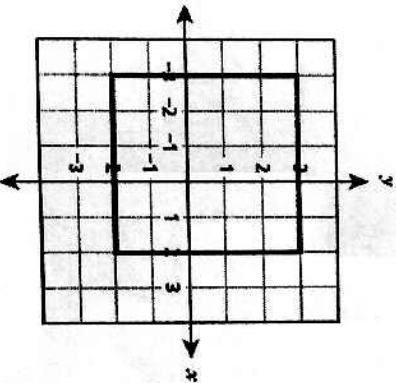
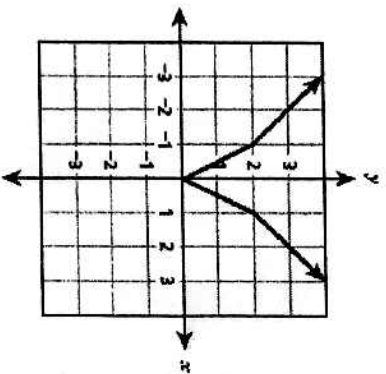
1) Does the equation below represent a linear function? Explain your reasoning.

$$y = \frac{2}{x} ; x \neq 0$$

2) Write an equation with a greater slope but a smaller y-intercept than the function represented by the table.

x	y
-1	5
1	9
3	13
5	17

3) Cross out all graphs that do not represent functions.



4) Explain your choices.

$$0.4 \left(2x + \frac{1}{2} \right) = 3[0.2x + (-2)] - 4$$

Solve:

$$3x - 6y = 18$$

$$15y + 5x = -135$$

A computer can do 1000 operations in 4.5×10^{-6} seconds. How many operations can be done by this computer in one hour? Express your answer in scientific notation.