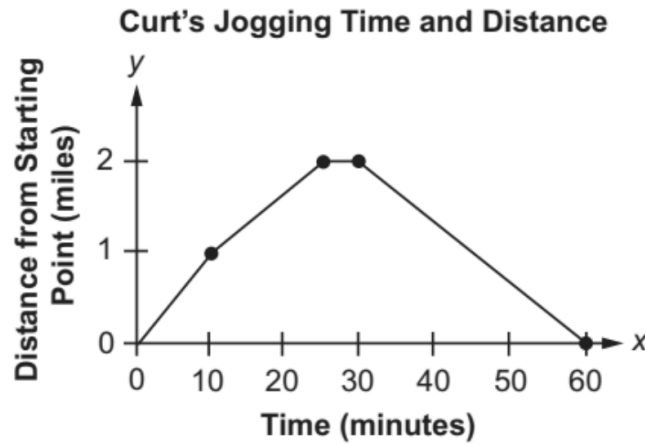


Name \_\_\_\_\_

## Justify your answer #7

Curt jogged on a path that was 2 miles long, took a break, and then jogged back along the same path to where he started. He jogged at different speeds for different distances along the path as shown in the graph.



Between which times did Curt jog the fastest?

- A. 0 minutes and 10 minutes
- B. 10 minutes and 25 minutes
- C. 25 minutes and 30 minutes
- D. 30 minutes and 60 minutes

Write an explanation proving why your answer choice is correct. Be specific and show all work.

---

---

---

---

---

---

---

---

---

---